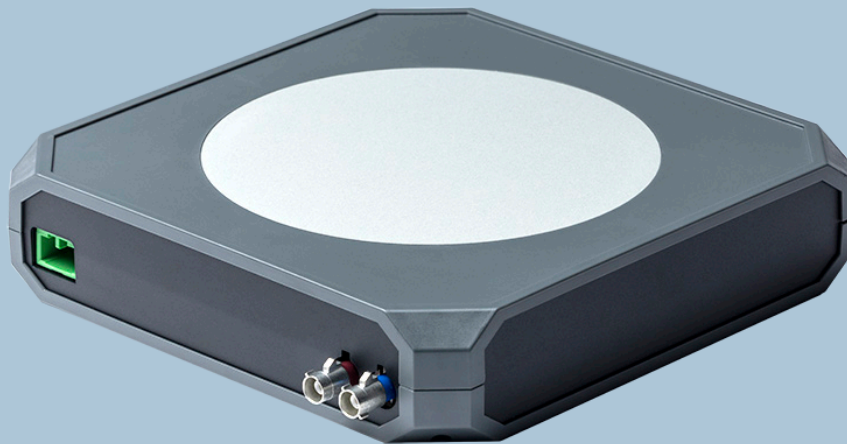


Product Data Sheet

HOST Monitor Xperience (HMX)



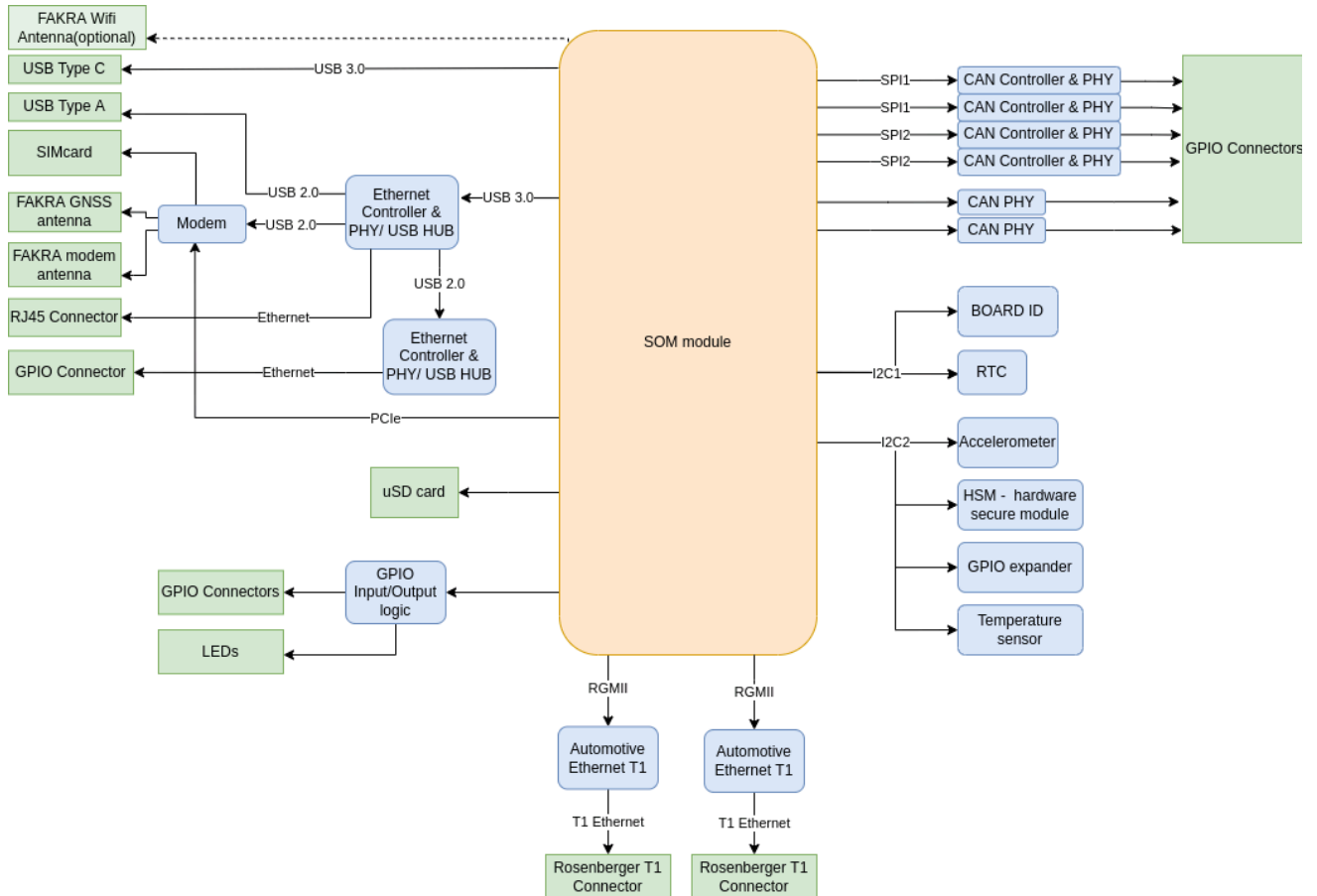
**Host Monitor Xperience + Host Insight
= Host Complete Xperience**

Instant data processing during actual usage.

With insights tailored to your needs.

Accessible anywhere.

System design for Host Monitor X (HMX)



Certificates: CE, REACH ROHS

Operating Temperature: -40 to +85

Size without connectors: 160x160x30mm

Boot button (from eMMC, SD & USB)

Reset button

HSM - Hardware Secure module: storing encryption keys

Handle vibration and other stresses from a vehicle

Sensors and MEMS: Accelerometer & temperature

Linux: Yocto Kirkstone, kernel 5.15

Internal FTDI type header

Functions and interface Host Monitor X (HMX)

Accelerometer	3-axis
Bluetooth	Optional
Buzzer	Internal and power for external
CAN	6 CAN-FD
CPU	NXP iMX8mp 64bit
Digital Inputs	6
Digital Output	12/24V 10x Sink/Source up to 1.5A depending on port
Ethernet	2x 100/1000 Base-T1(Rosenberger), 2x 100-BaseTx (RJ45 and MX34)
External Logging	uSD Card
GPS	Included in modem, external antenna
Housing	Aluminium/plastic
Start Signal	KL15 External input, 2.5-36V (5 inputs)
Internal Storage	64 GB eMMC
LEDs	5 red/green/yellow combinations, software controlled
Modem	5G or 4G, M2 connector
Nominal Voltage	12-24V
Operating Temperature	-40C to +85C
Operating System	Yocto Kirkstone, Linux Kernel 5.15+
Power Consumption @12V <	1 mA in "Off", 25 mA in "Suspend to RAM"
Protection	IP30
RAM	4 GB
Real Time Clock	Yes, battery backed up
SIM	nanoSIM
Sleep function	Yes. Wake up on CAN, digital inputs, accelerometer
Size without connectors	160x160x30mm
UPS	3 seconds supercap power
USB	USB 3.0 OTG type C, USB 2.0 host type A
Wi-Fi	b/g/n/ac+BT, external antenna (optional)
Audio	I/O analog